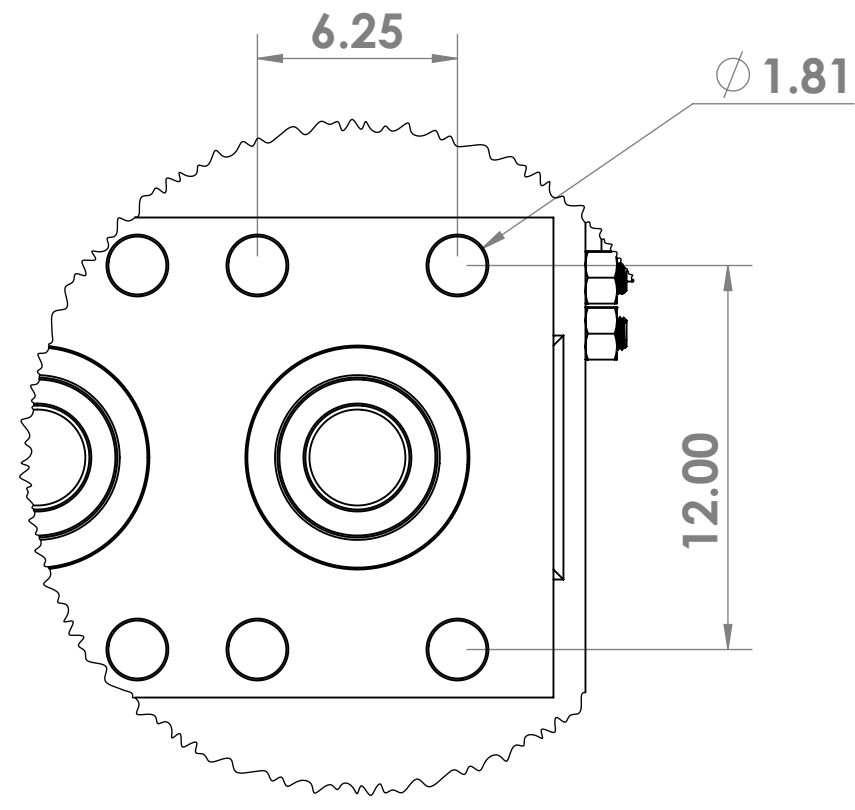
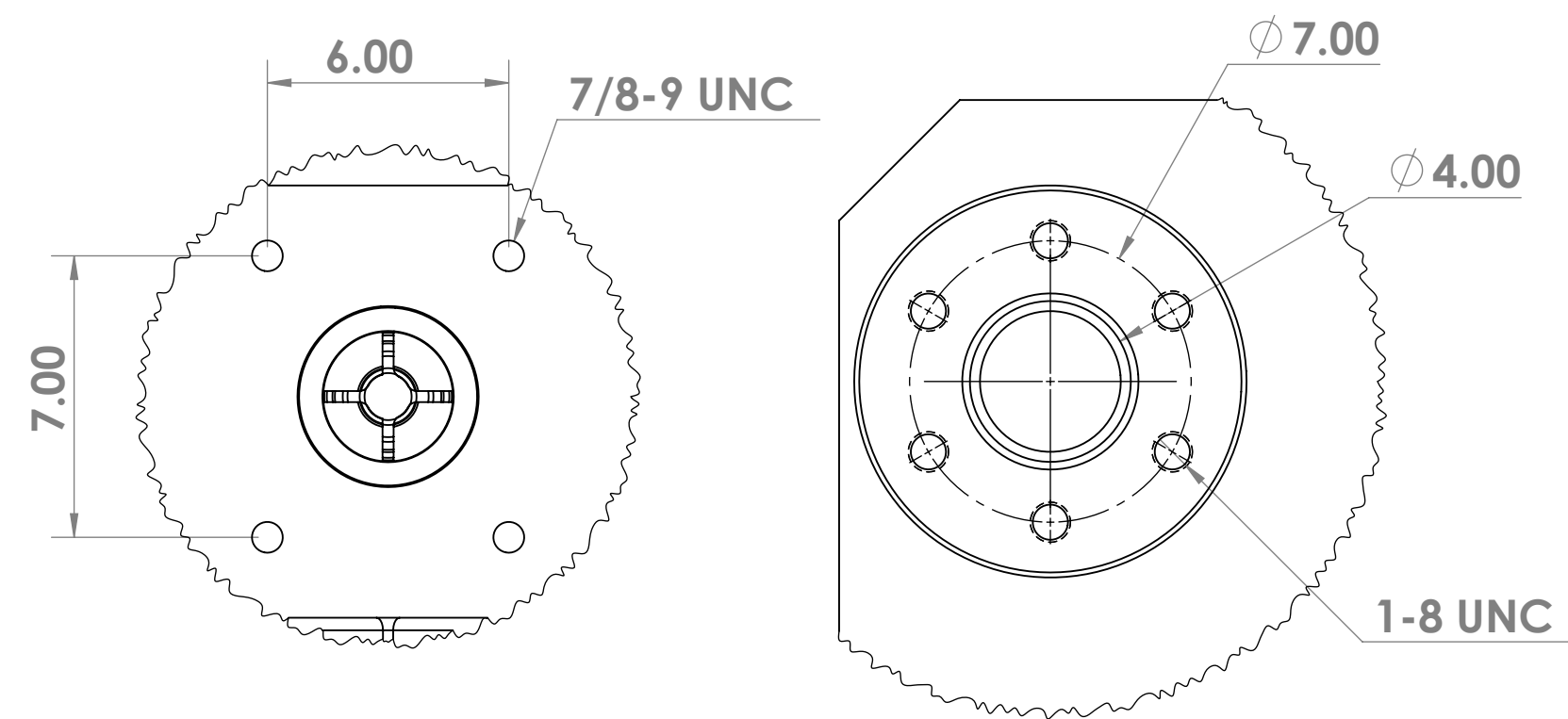
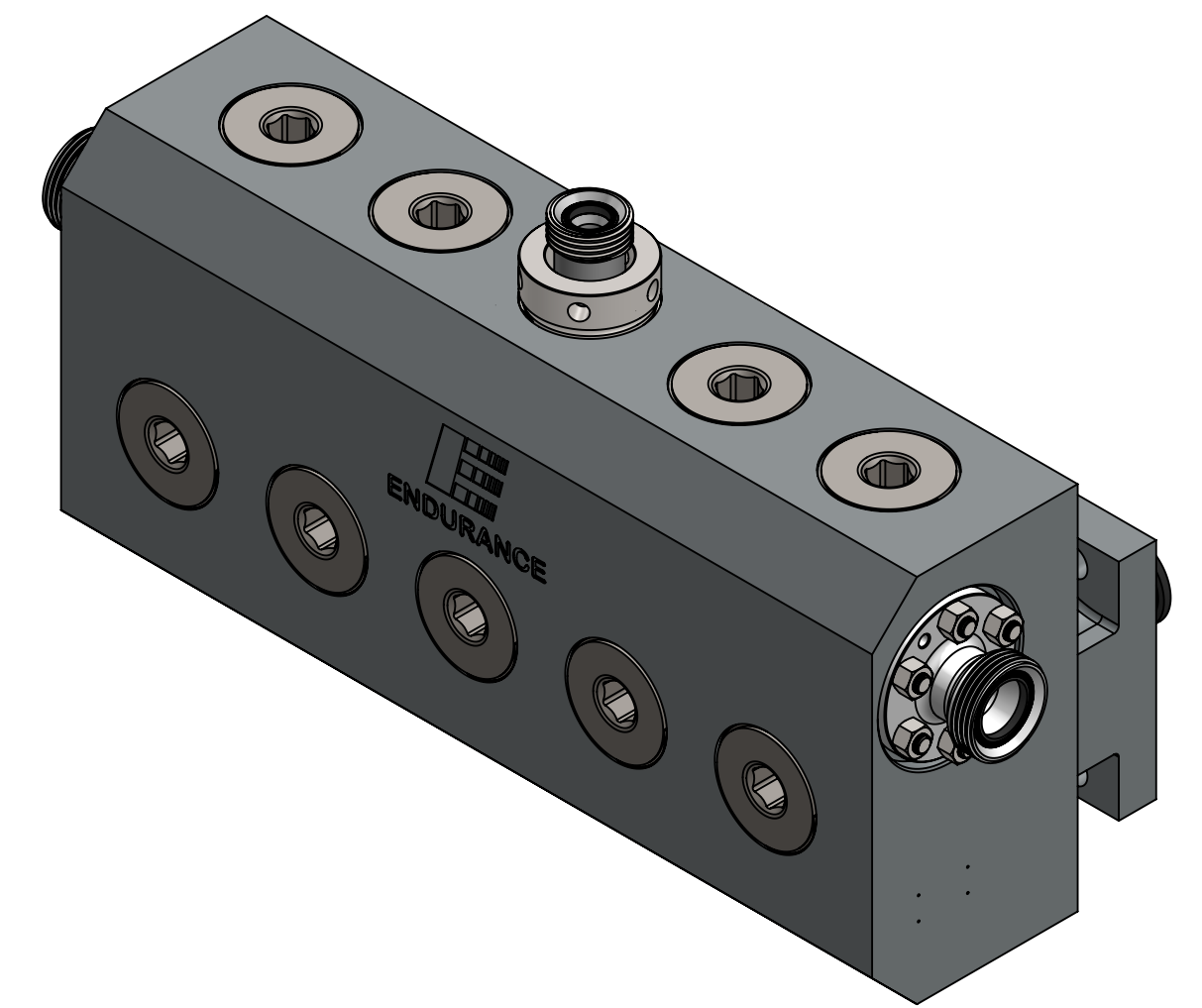
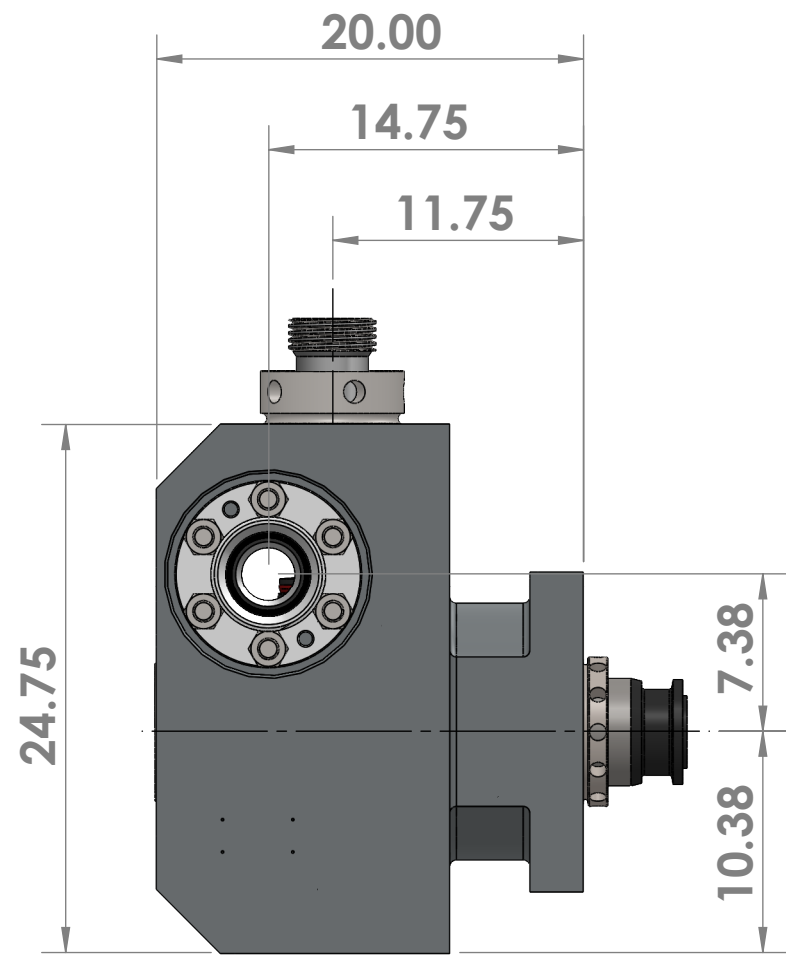
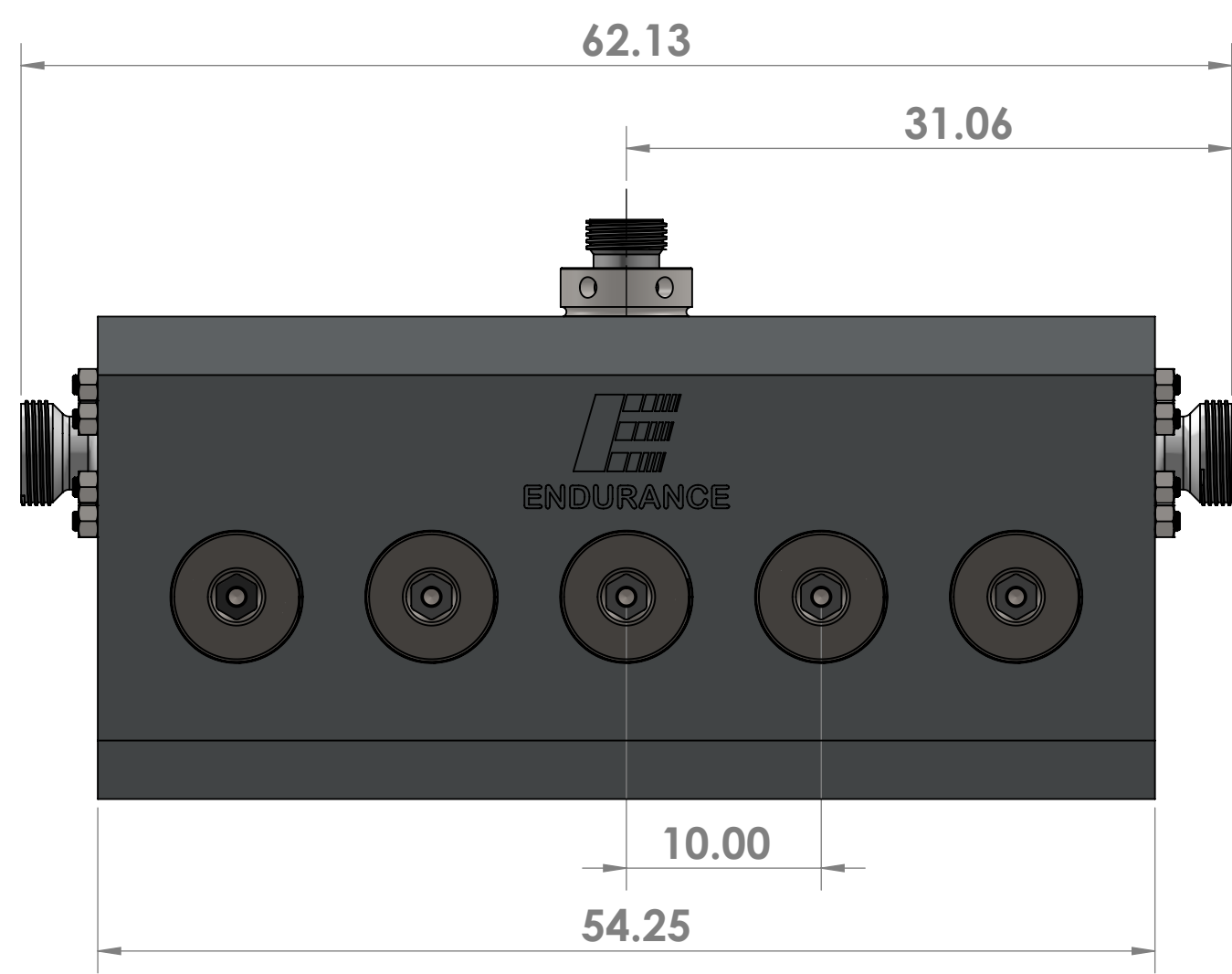


REVISIONS				
ZONE	REV.	DESCRIPTION	DATE	APPROVED
ALL	-	Initial Release	10/31/18	RDB



MOUNT FLANGE BOLT PATTERN

SUCTION MANIFOLD BOLT PATTERN

DISCHARGE FLANGE BOLT PATTERN

EMI QWSX 2500	
PLUNGER SIZE AVAILABLE	4.0", 4.5"
STROKE	8"
HP	2500
MOUNTED WEIGHT	5185 LBS.
MAX PSI	4.0" 15500PSI/ 4.5" 15000

For more information:

Eastham Machining International
 2413 Roy Rd.
 Pearland, TX, 77581
 sales@easthammachining.com
 (281) 412-5332

UNLESS OTHERWISE SPECIFIED: DIMENSIONS ARE IN INCHES. DRAWING SHALL BE INTERPRETED PER ASME-Y14.5M-2009. SURFACE FINISH: 125 RMS FINISH.				TOLERANCES: FRACTIONAL: +/- 1/16 DECIMAL: .XX = +/- 0.02 .XXX = +/- 0.005 ANGULAR: +/- 1 degree		DEBURR AND BREAK SHARP EDGES		DO NOT SCALE DRAWING		REVISION -	
DRAWN: R De Bock		SIGNATURE:		DATE: 10/31/18		FINISH: 17-4SS		MATERIAL: 17-4SS		WEIGHT: 4490 Lbs.	
CHK'D:		APPV'D:		MFG:		Q.A.:		EASTHAM MACHINING INTERNATIONAL		EASTHAM MACHINING INTERNATIONAL 2413 Roy Rd., Pearland, TX 77581	
TITLE: EMI QWSX GENERAL SPECIFICATIONS		DWG. NO. EMI-QWSX-4.5_SPEC		SCALE: 1:9		SHEET 1 OF 1		A2			

