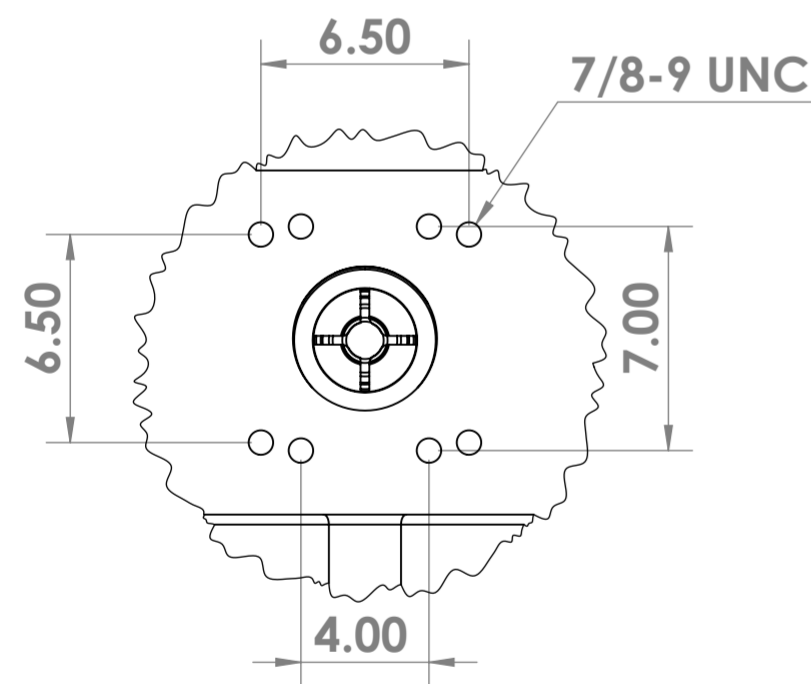
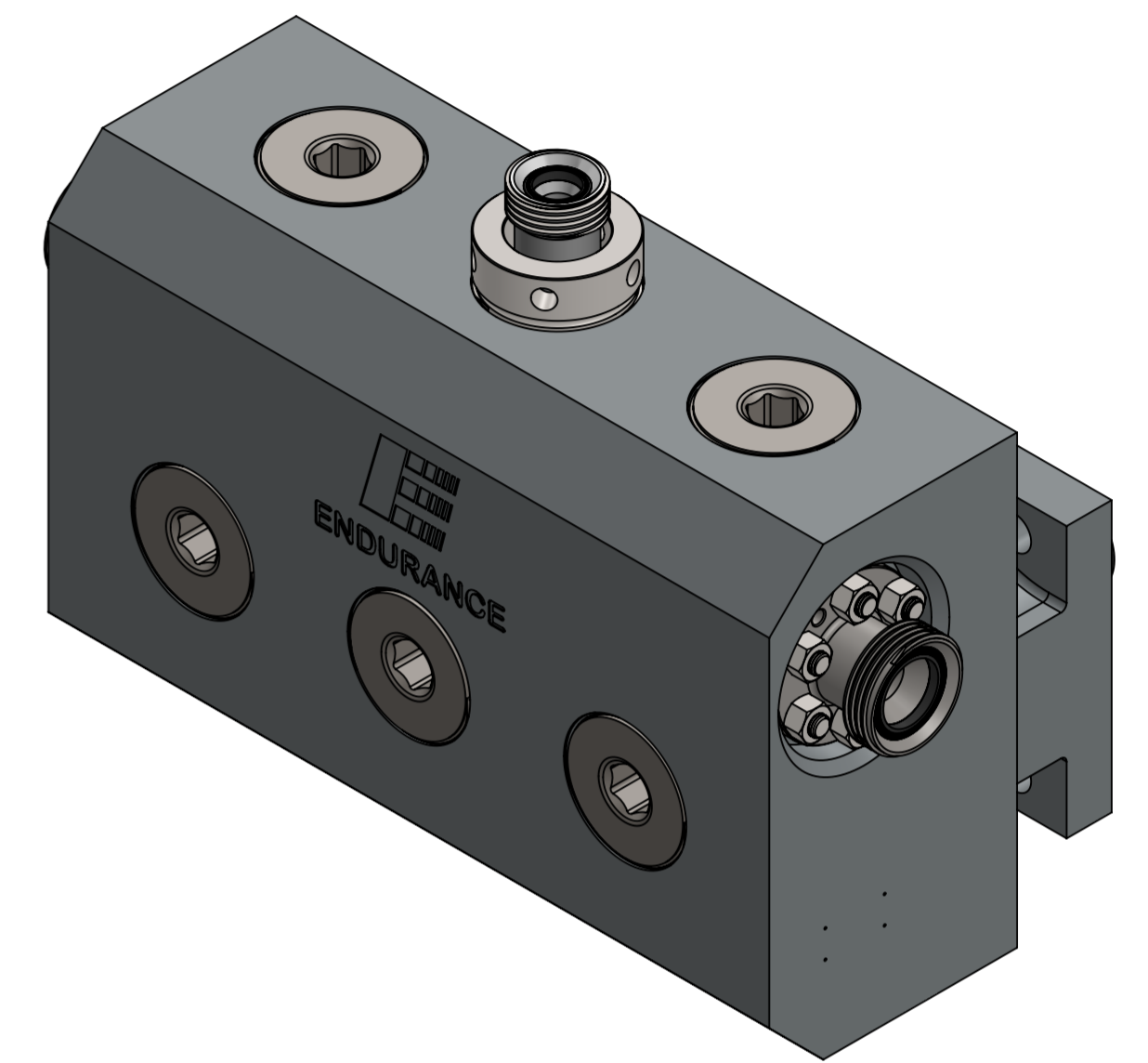
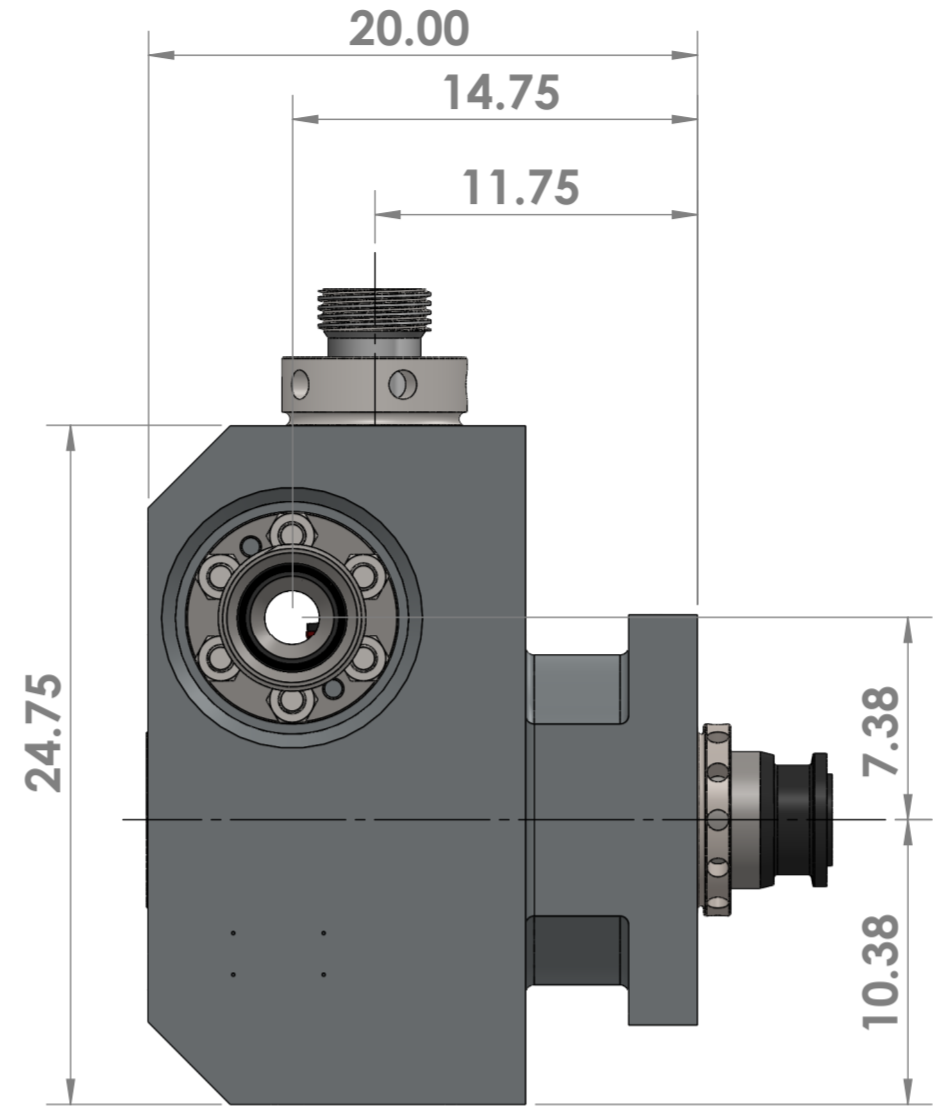
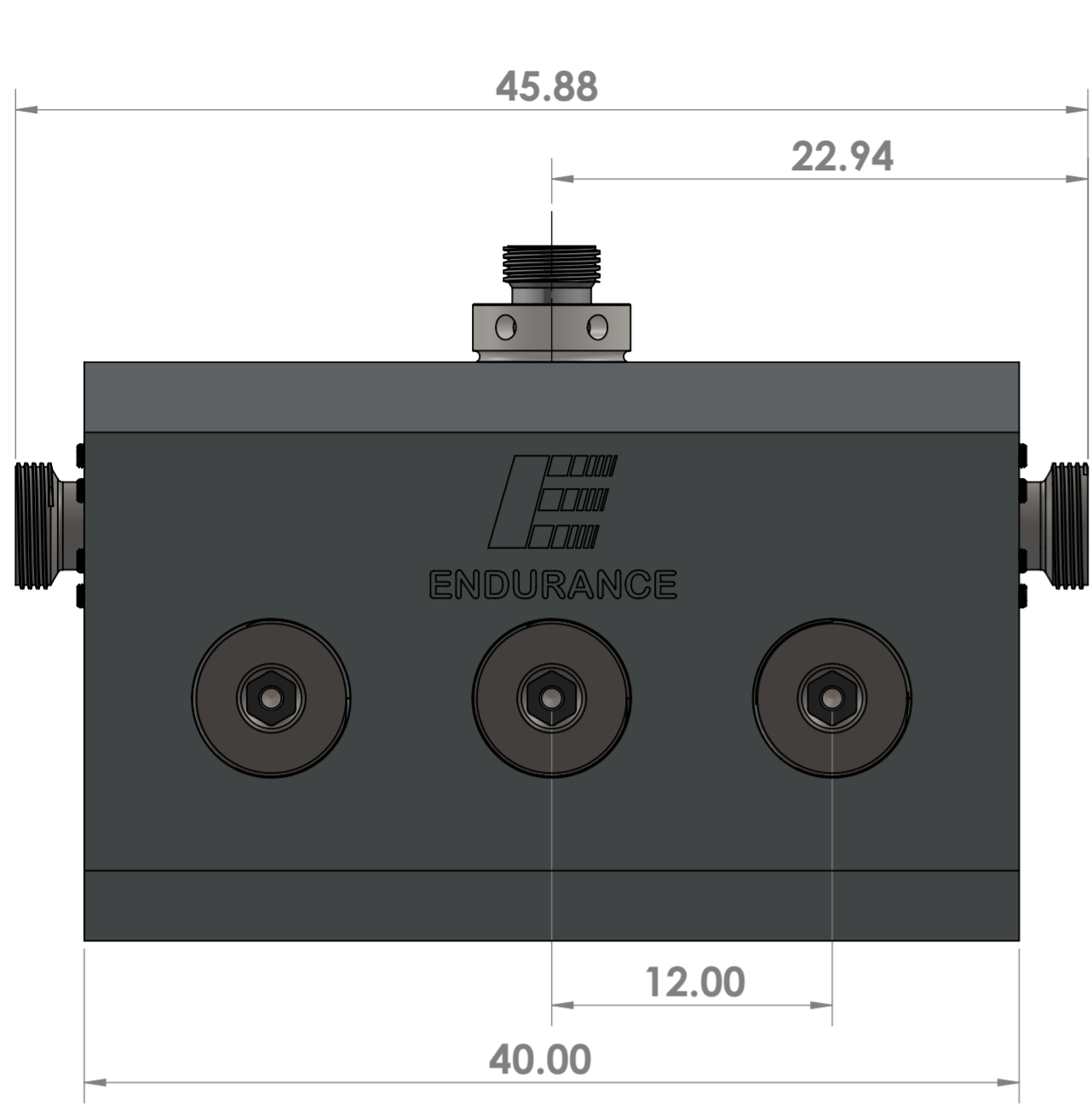
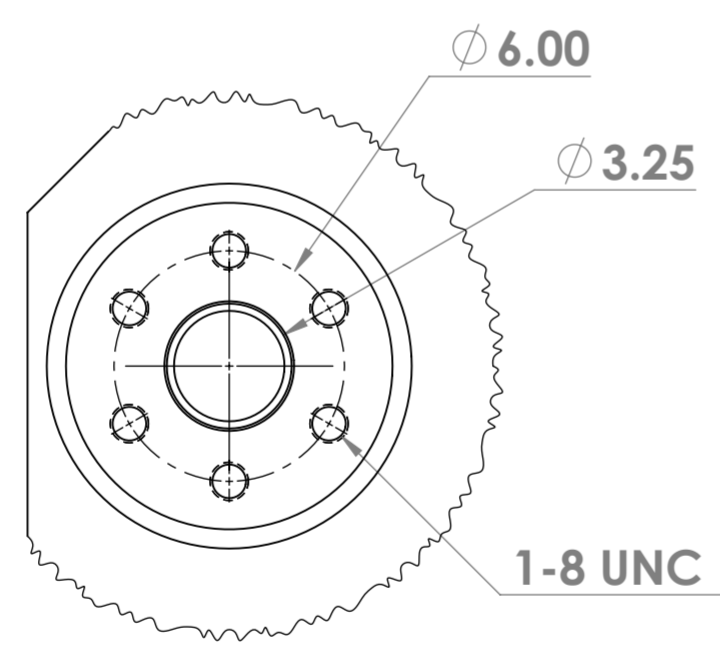


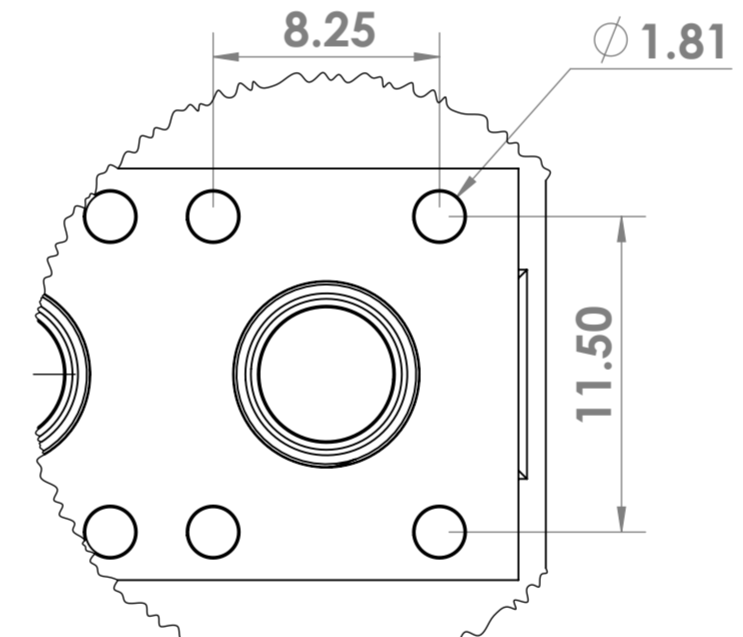
REVISIONS				
ZONE	REV.	DESCRIPTION	DATE	APPROVED
ALL	-	Initial Release	10/31/18	RDB



**SUCTION MANIFOLD BOLT PATTERN**



**DISCHARGE FLANGE BOLT PATTERN**



**MOUNT FLANGE BOLT PATTERN**

<b>EMI TWSX 2250</b>	
PLUNGER SIZE AVAILABLE	4.5", 5.0"
STROKE	8"
HP	2250
MOUNTED WEIGHT	4490 LBS.
MAX PSI	12500 PSI

For more information:

***Eastham Machining International***  
 2413 Roy Rd.  
 Pearland, TX, 77581  
 sales@easthammachining.com  
 (281) 412-5332



UNLESS OTHERWISE SPECIFIED: DIMENSIONS ARE IN INCHES. DRAWING SHALL BE INTERPRETED PER ASME-Y14.5M-2009. SURFACE FINISH: 125 RMS FINISH.				TOLERANCES: FRACTIONAL: +/- 1/16 DECIMAL: .XX = +/- 0.02 .XXX = +/- 0.005 ANGULAR: +/- 1 degree		DEBURR AND BREAK SHARP EDGES		DO NOT SCALE DRAWING		REVISION: -	
NAME: R De Bock		SIGNATURE:		DATE: 10/31/18		FINISH: 17-4SS		MATERIAL: 17-4SS		WEIGHT: 4490 Lbs.	
DRAWN: R De Bock		CHK'D:		APPV'D:		MFG:		Q.A:		SCALE: 1:7	
TITLE: EMI TWSX GENERAL SPECIFICATIONS		DWG. NO.: EMI-TWSX-4.5_SPEC		SHEET 1 OF 1		A2		EASTHAM MACHINING INTERNATIONAL 2413 Roy Rd., Pearland, TX 77581		PROPRIETARY AND CONFIDENTIAL THE INFORMATION CONTAINED IN THIS DRAWING IS THE SOLE PROPERTY OF EMI. ANY REPRODUCTION IN PART OR AS A WHOLE WITHOUT THE WRITTEN CONSENT OF EMI IS PROHIBITED.	